



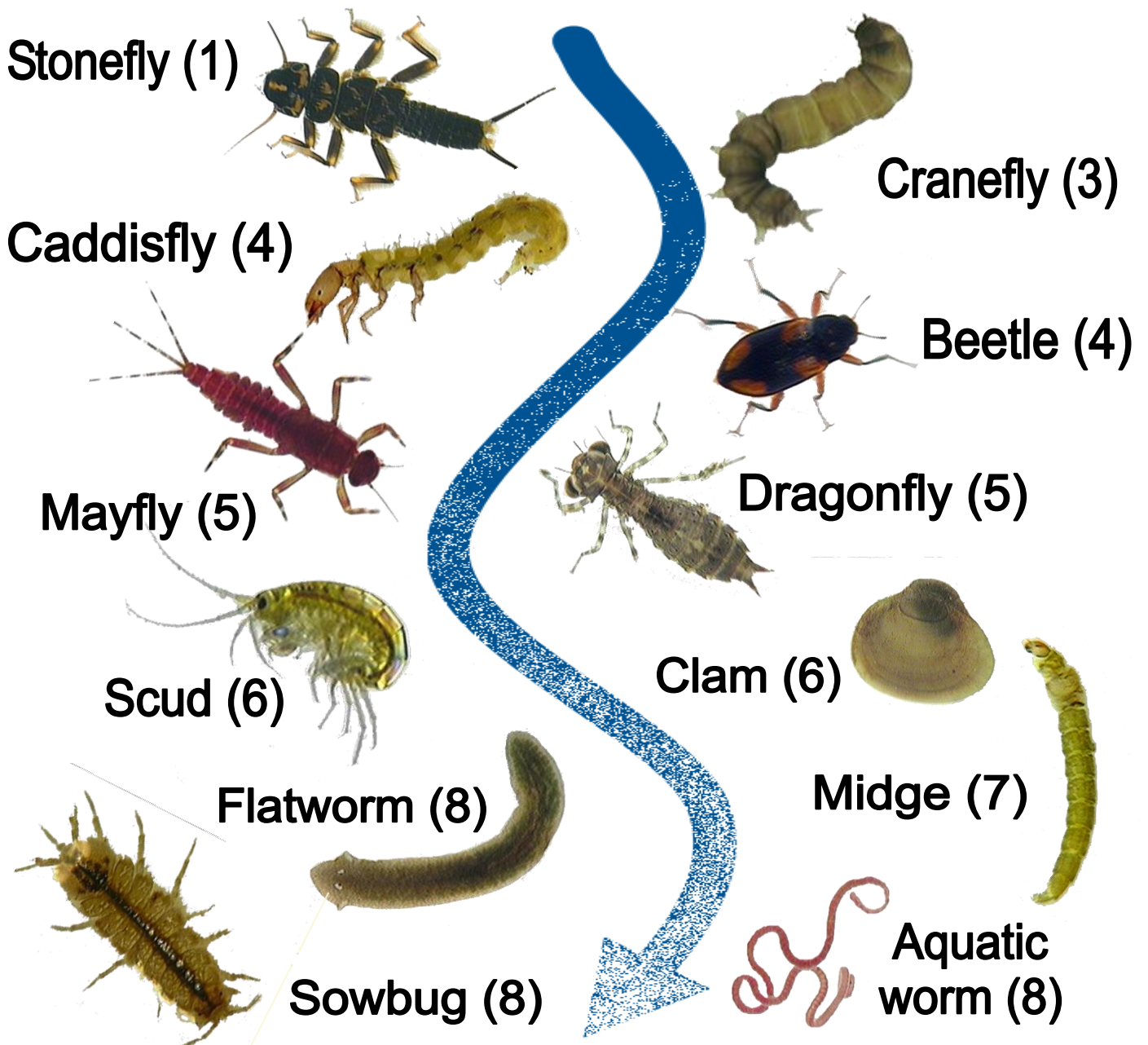
# BMI Pollution Tolerance

(Adapted from Hilsenhoff Biotic Index, 1988)

What do the BMI found at your site tell you about the stream's health?

Each BMI has been given a predetermined score to reflect its sensitivity to pollution. BMI with a low tolerance value are sensitive to pollution (i.e. they cannot "tolerate" it) while BMI with a high value can tolerate a wide range of environmental variables. Streams where lots of intolerant BMI are found are considered healthy.

Mostly Low Tolerance BMIs  
Healthy Stream



Mostly High Tolerance BMIs  
Impaired Stream